

CROWN VIEW

CROWN VIEW

Victoria  
Riverside

# Crown View

CROWN VIEW

Floor Plans

CROWN VIEW







# Floor Plans

Set in between the greenery of the Irk River Valley and the hustle and bustle of the city centre, this landmark development is home to over 634 new apartments, townhouses and maisonettes in Manchester's characterful Red Bank neighbourhood.

# Victoria Riverside







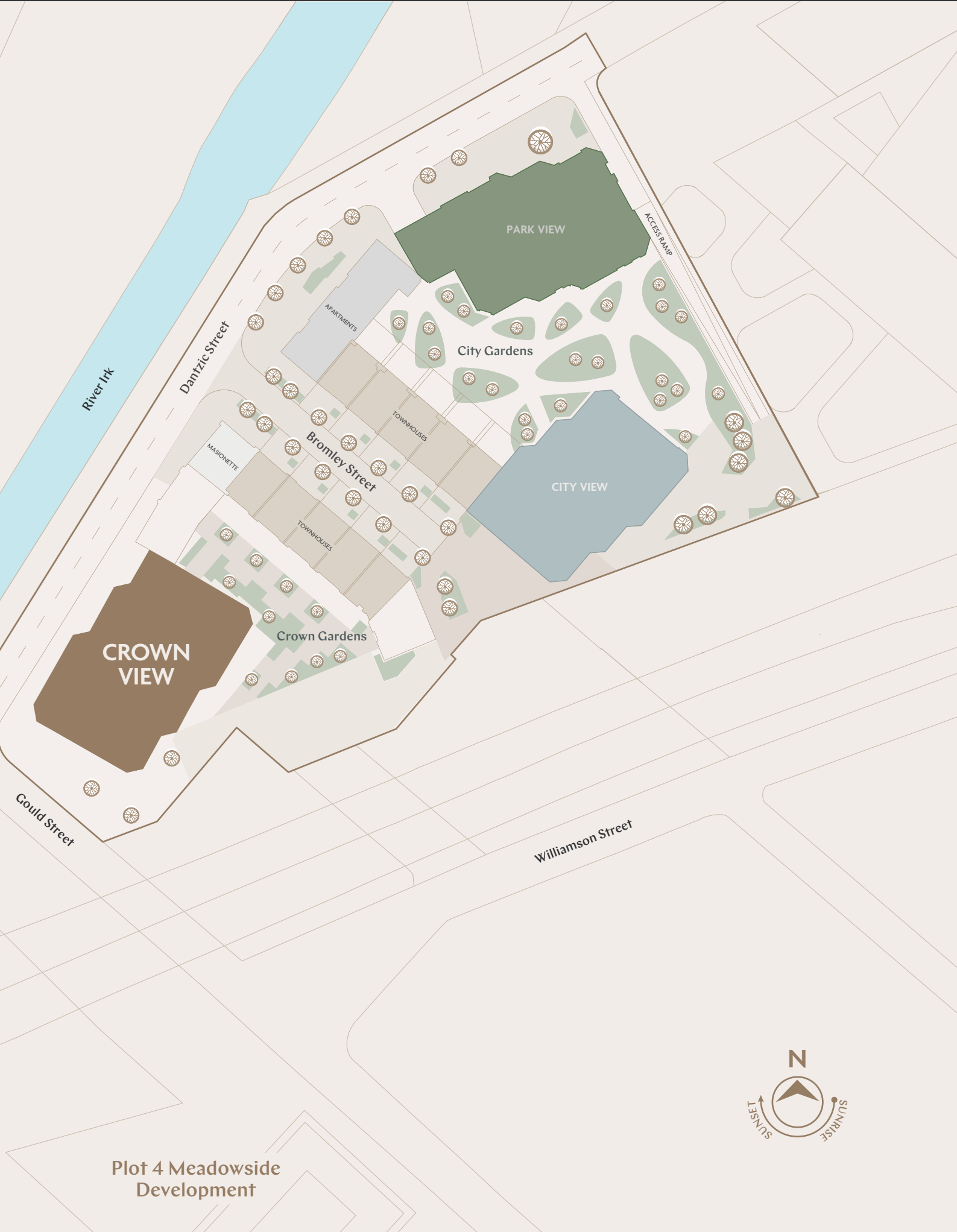


# Site plan

At the forefront of the Victoria Riverside development and towering at 37 storeys, Crown View is the tallest of the three towers offering undisturbed views of the city skyline.

The gateway to the emerging Red Bank neighbourhood, Crown tower blends city living with river park at its heart. The 275-apartments tower boasts over 4,500 sq ft of exclusive, private amenity featuring co-working spaces, resident’s bar and lounge, gym and yoga studio, co-working spaces and private dining.

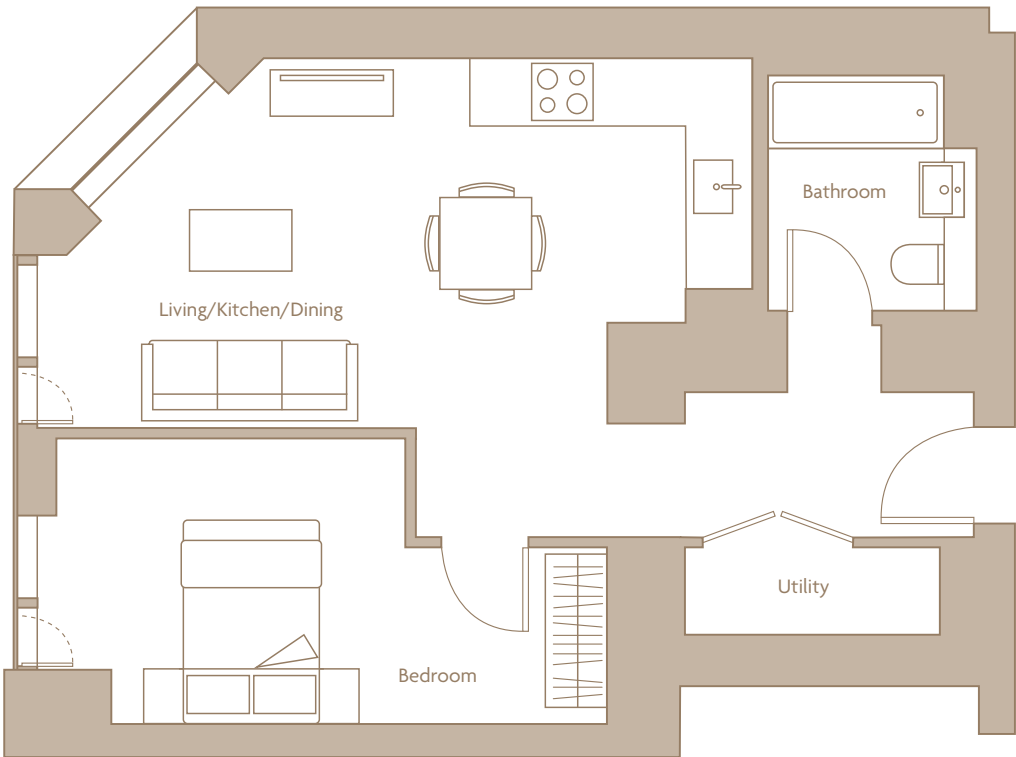




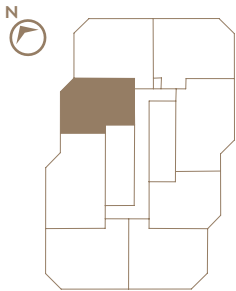
Plot 4 Meadowside Development

APARTMENT 03  
FEATURES ON FLOORS 03 - 36

# 1 BED APARTMENT

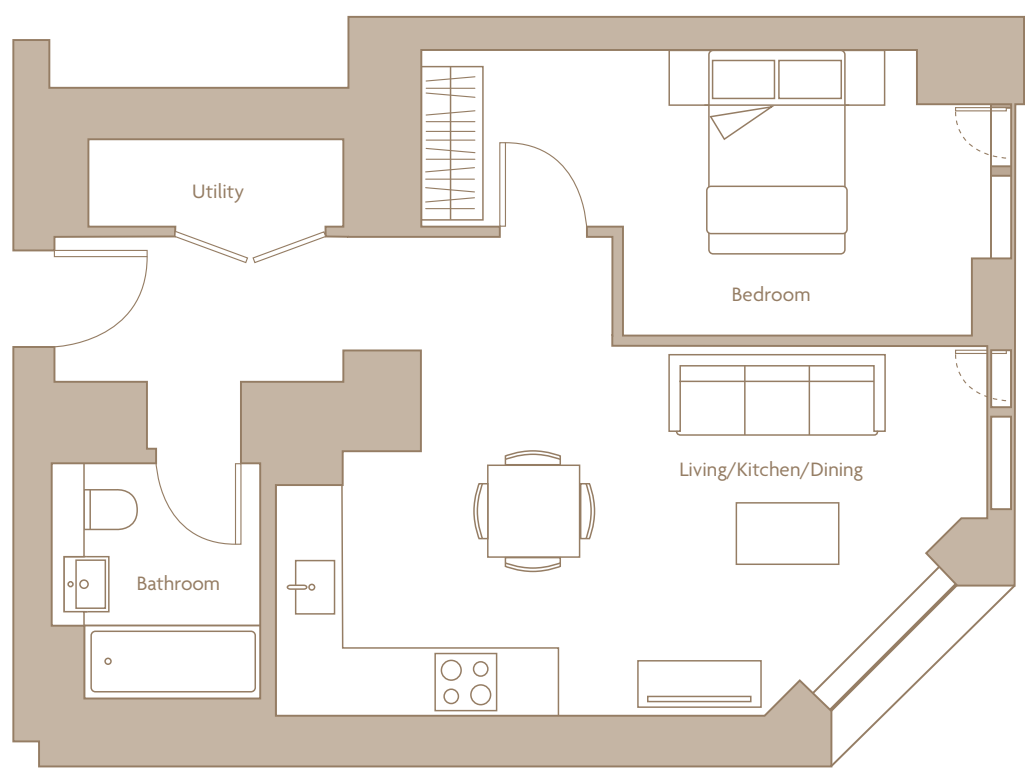


Internal Areas	50.8 sq m	546.8 sq ft
Living/ Kitchen/ Dining	6684 x 3598 mm	
Bedroom 1	5359 x 2772 mm	

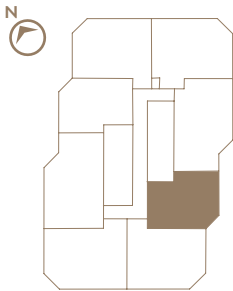


APARTMENT 07  
FEATURES ON FLOORS 03 - 36

# 1 BED APARTMENT

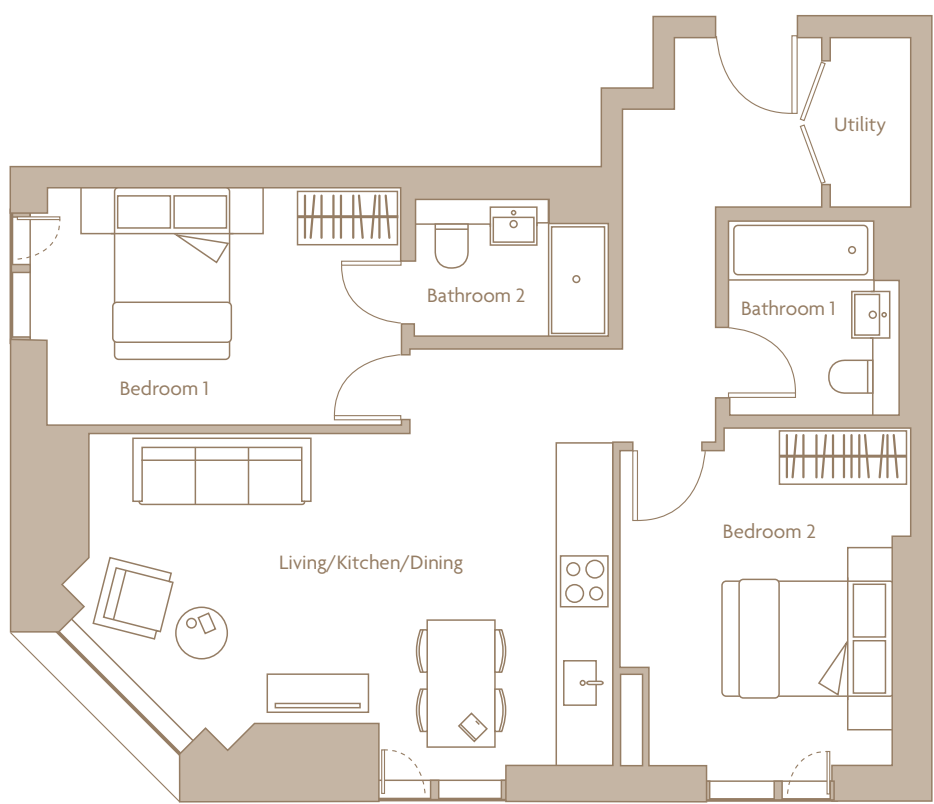


Internal Areas	50.9 sq m	547.88 sq ft
Living/ Kitchen/ Dining	6555 x 3872 mm	
Bedroom 1	5415 x 2777 mm	

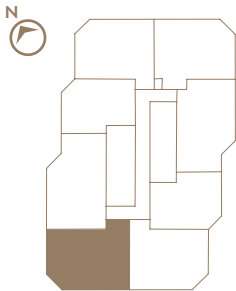


APARTMENT 01  
FEATURES ON FLOORS 03 - 36

# 2 BED APARTMENT



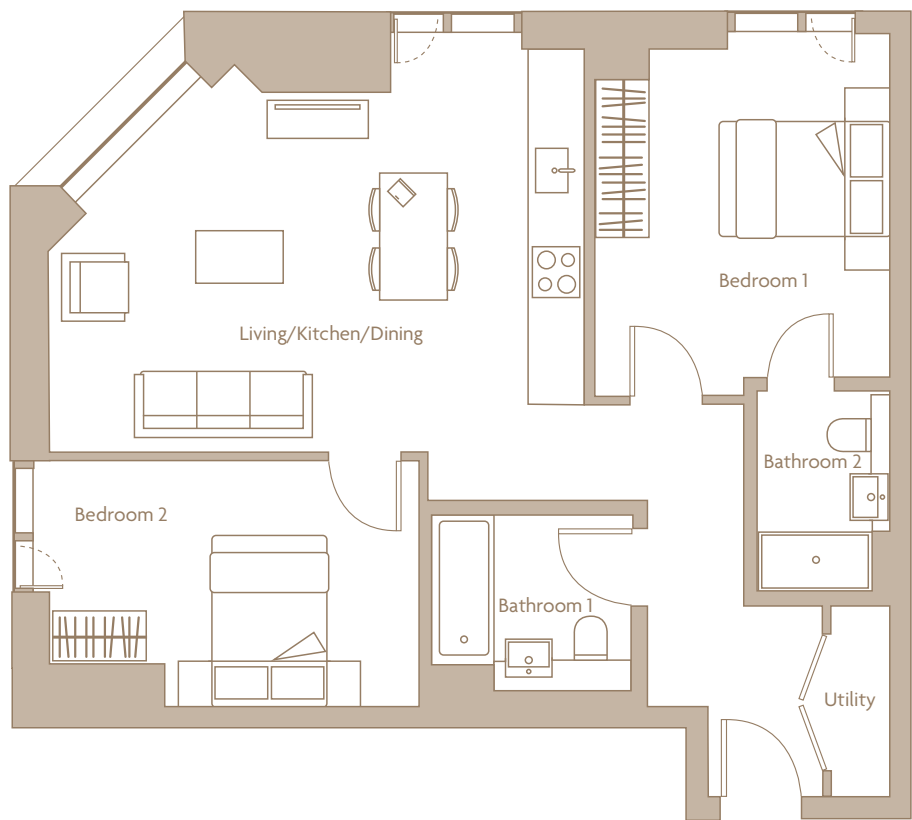
Internal Areas	70.3 sq m	756.70 sq ft
Living/ Kitchen/ Dining	6667 x 3771 mm	
Bedroom 1	4171 x 2950 mm	
Bedroom 2	3968 x 3433 mm	



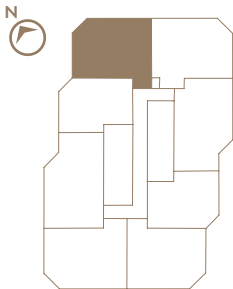


APARTMENT 04  
FEATURES ON FLOORS 03 - 36

2 BED APARTMENT



Internal Areas	71.9 sq m	773.9 sq ft
Living/ Kitchen/ Dining	6126 x 5337 mm	
Bedroom 1	3780 x 3345 mm	
Bedroom 2	4223 x 2821 mm	



# Residents' Lounge & Gym

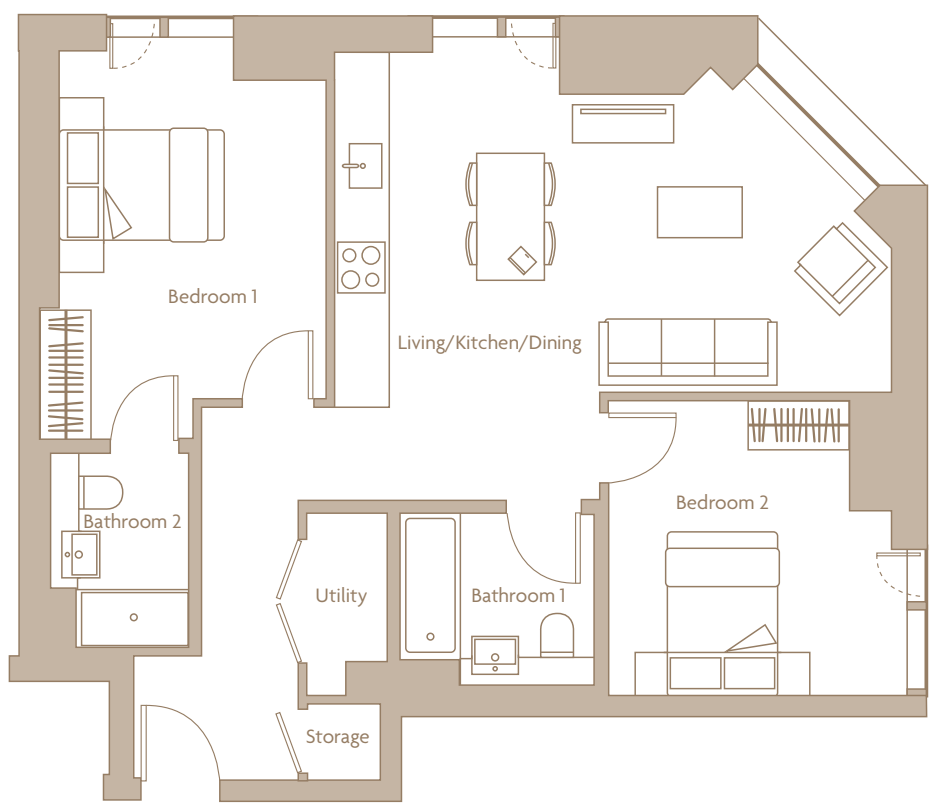




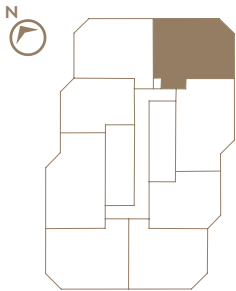


APARTMENT 05  
FEATURES ON FLOORS 03 - 36

# 2 BED APARTMENT



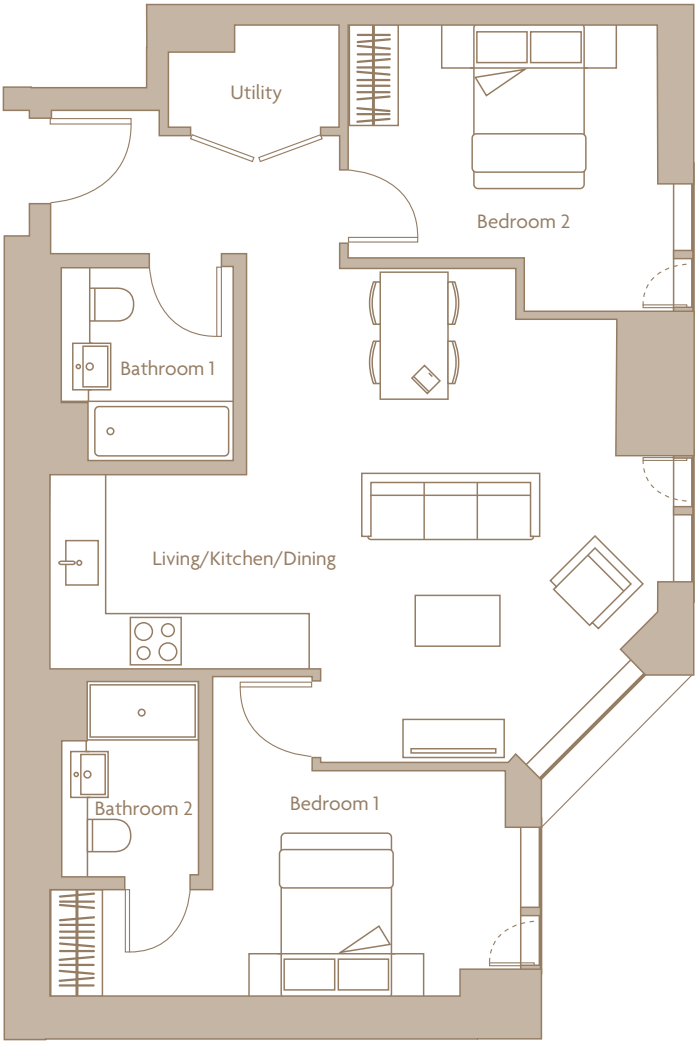
Internal Areas	73.9 sq m	795.45 sq ft
Living/ Kitchen/ Dining	6577 x 5385 mm	
Bedroom 1	4705 x 3376 mm	
Bedroom 2	3505 x 3329 mm	



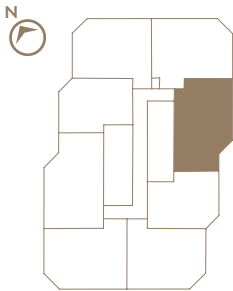


APARTMENT 06  
FEATURES ON FLOORS 03 - 36

# 2 BED APARTMENT

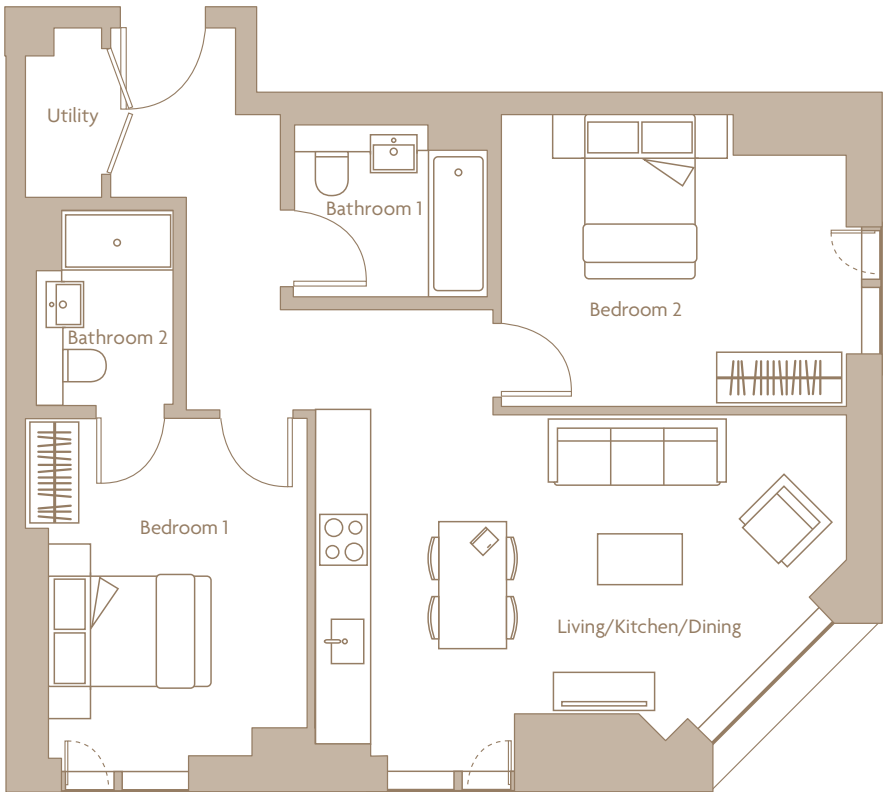


Internal Areas	75.7 sq m	814.83 sq ft
Living/ Kitchen/ Dining	7215 x 5847 mm	
Bedroom 1	5415 x 4074 mm	
Bedroom 2	3657 x 3355 mm	

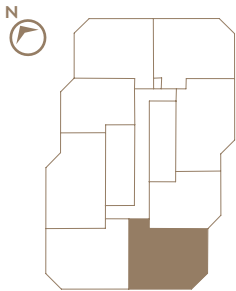


APARTMENT 08  
FEATURES ON FLOORS 03 - 36

2 BED APARTMENT

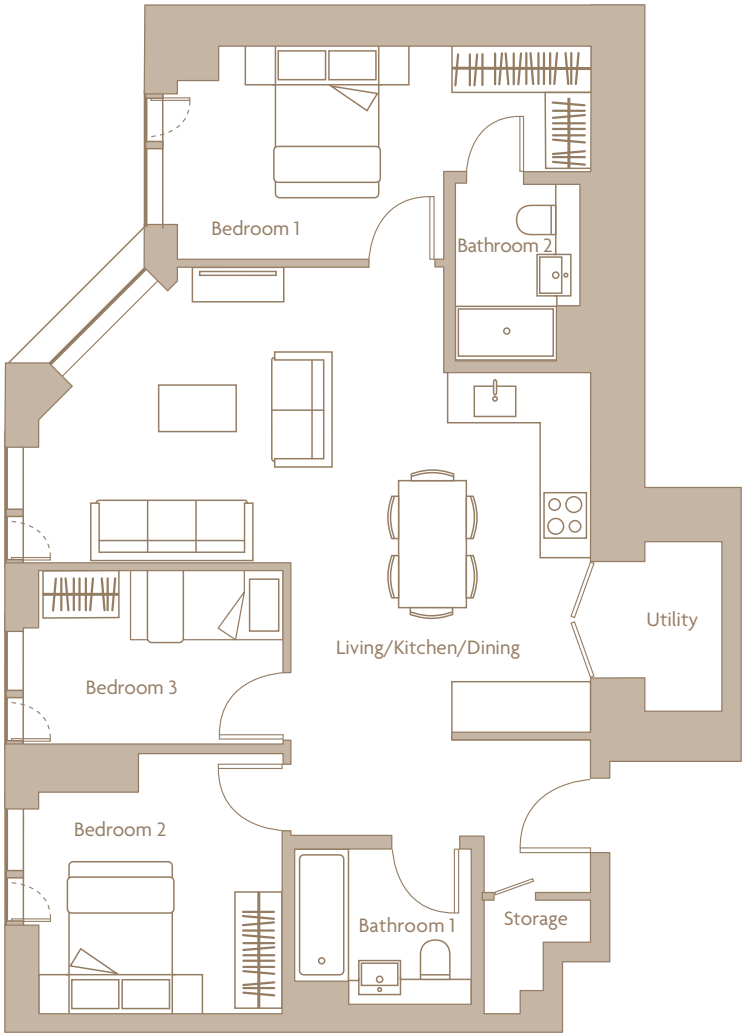


Internal Areas	71.2 sq m	766.39 sq ft
Living/ Kitchen/ Dining	6270 x 5361 mm	
Bedroom 1	3968 x 3319 mm	
Bedroom 2	4075 x 3296 mm	

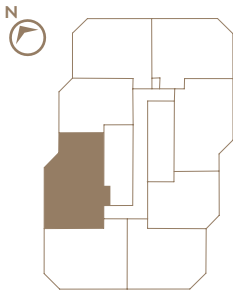


APARTMENT 02  
FEATURES ON FLOORS 03 - 36

# 3 BED APARTMENT



Internal Areas	86.9 sq m	935 sq ft
Living/ Kitchen/ Dining	7478 x 7159 mm	
Bedroom 1	5359 x 3064 mm	
Bedroom 2	3419 x 3172 mm	
Bedroom 3	3172 x 2250 mm	









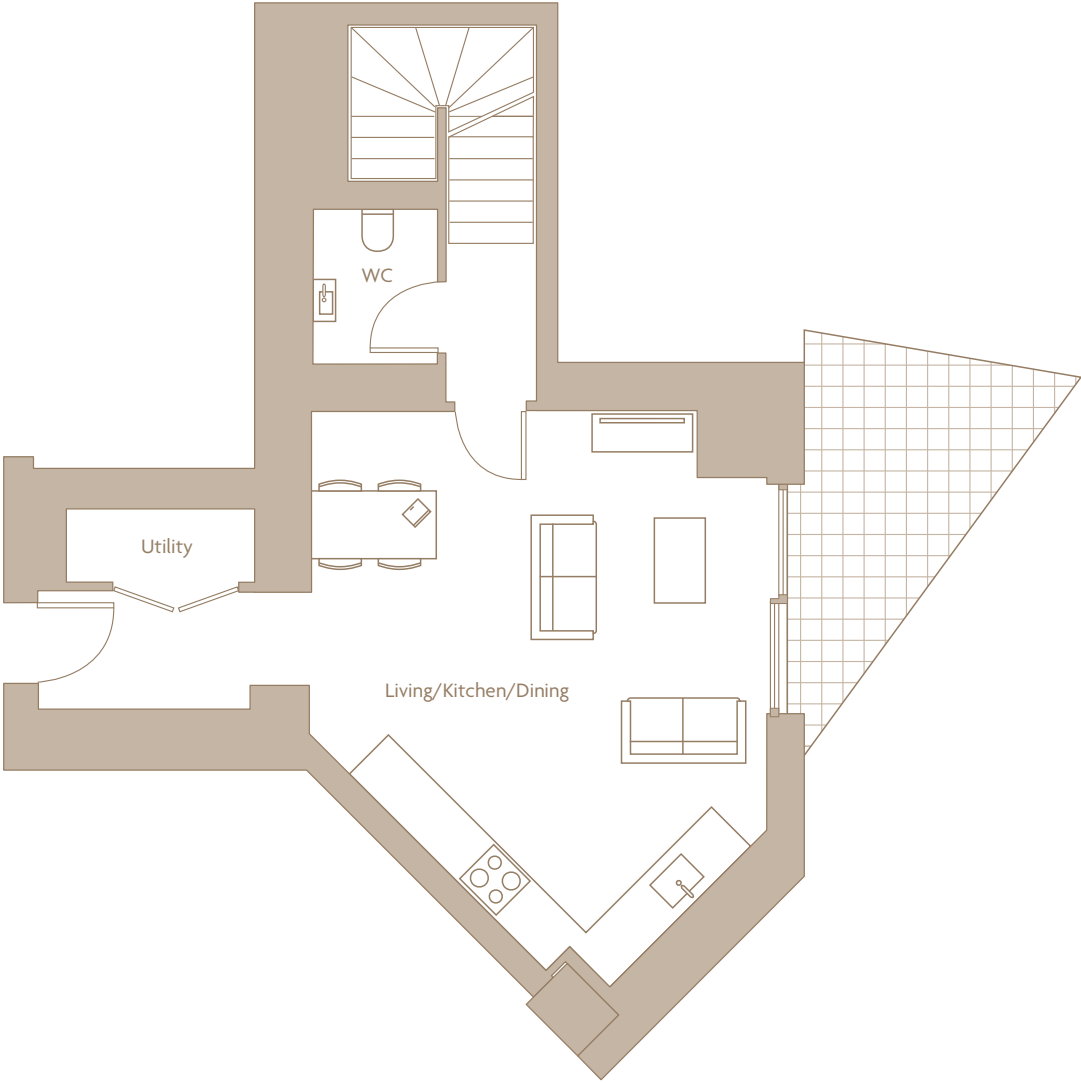




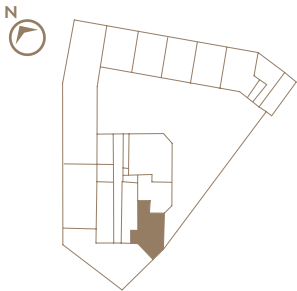
APARTMENT 03  
COVERS FLOORS 1 AND 2

# 2 BED DUPLEX

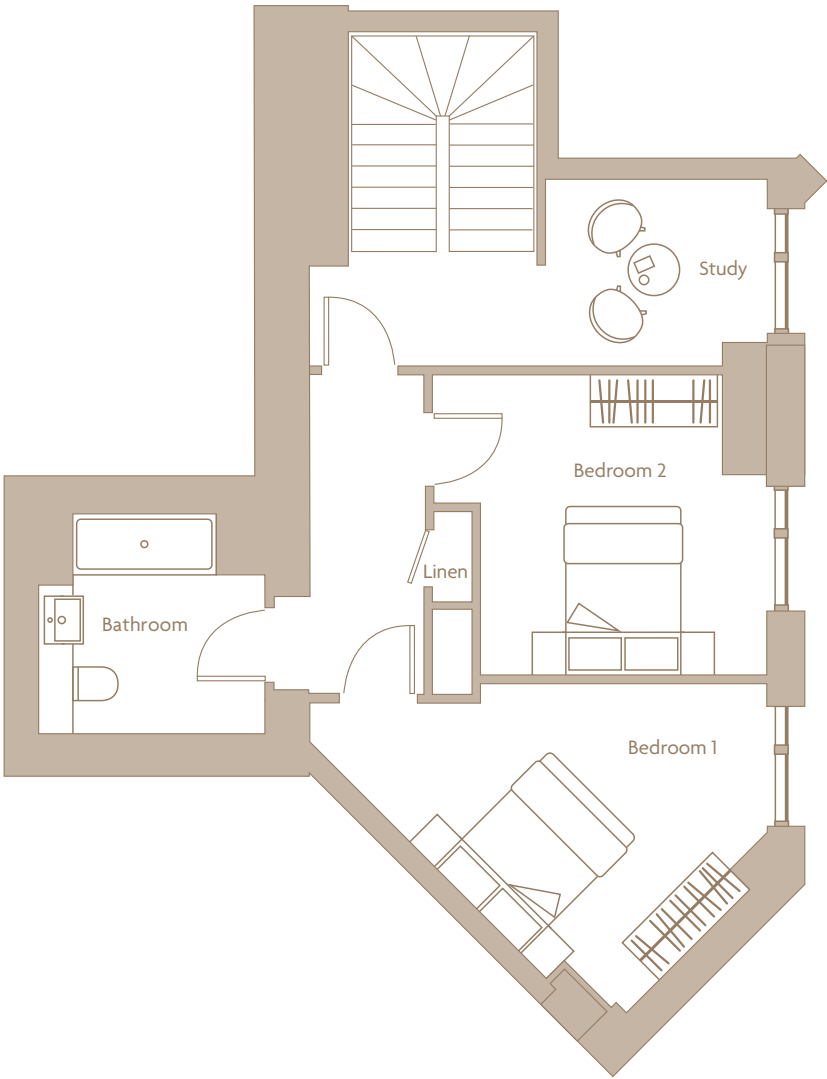
## LEVEL 1



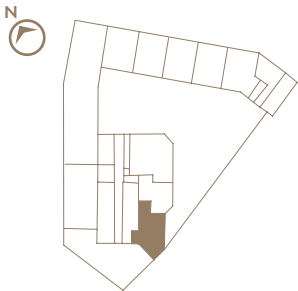
Internal Areas	48.6 sq m	523.13 sq ft
Living/ Kitchen/ Dining	7052 x 5403 mm	



LEVEL 2



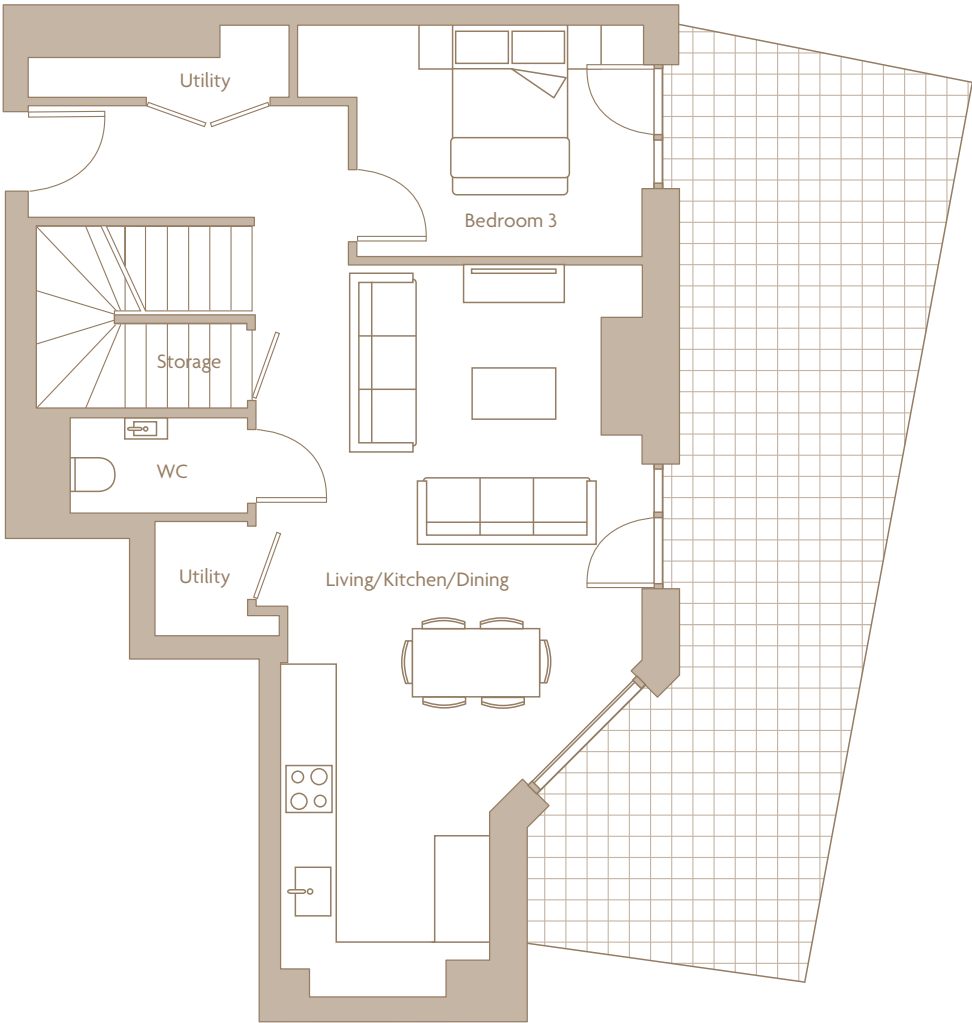
Internal Areas	50 sq m	538.2 sq ft
Bedroom 1		5403 x 3864 mm
Bedroom 2		3937 x 3556 mm
Study		2619 x 2212 mm



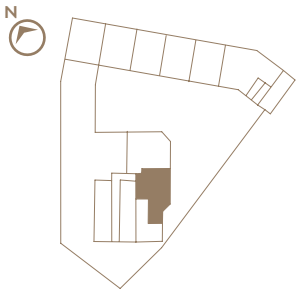
APARTMENT 02  
COVERS FLOORS 1 AND 2

# 3 BED DUPLEX

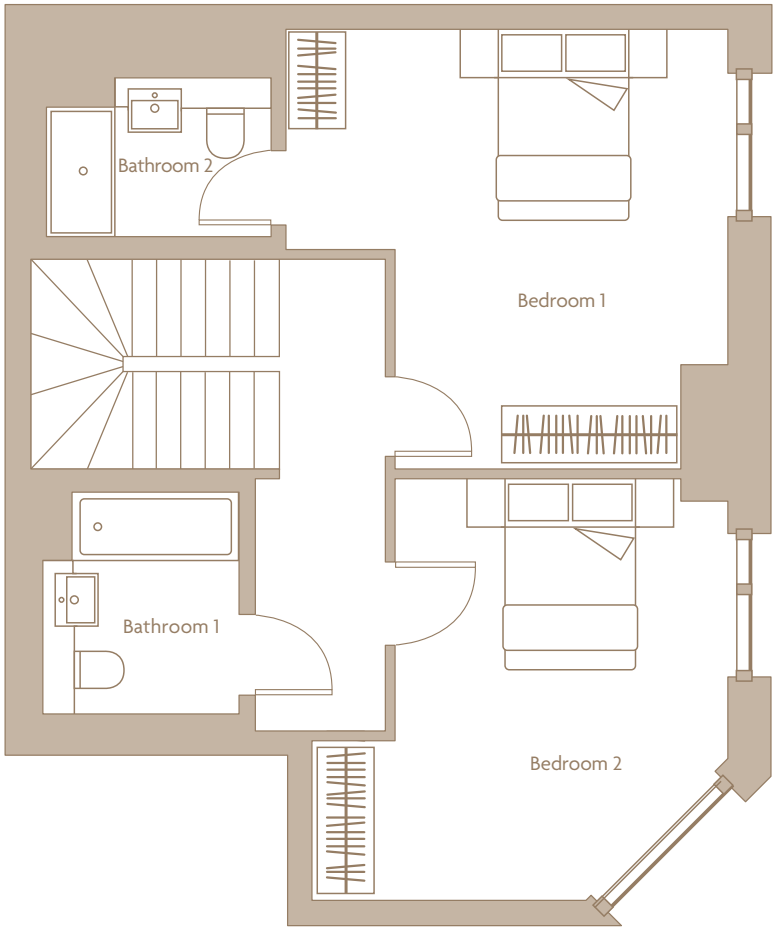
## LEVEL 1



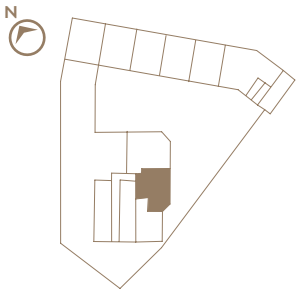
Internal Areas	61.3 sq m	659.83 sq ft
Living/ Kitchen/ Dining	8643 x 4560 mm	
Bedroom 3	4068 x 2731 mm	



LEVEL 2



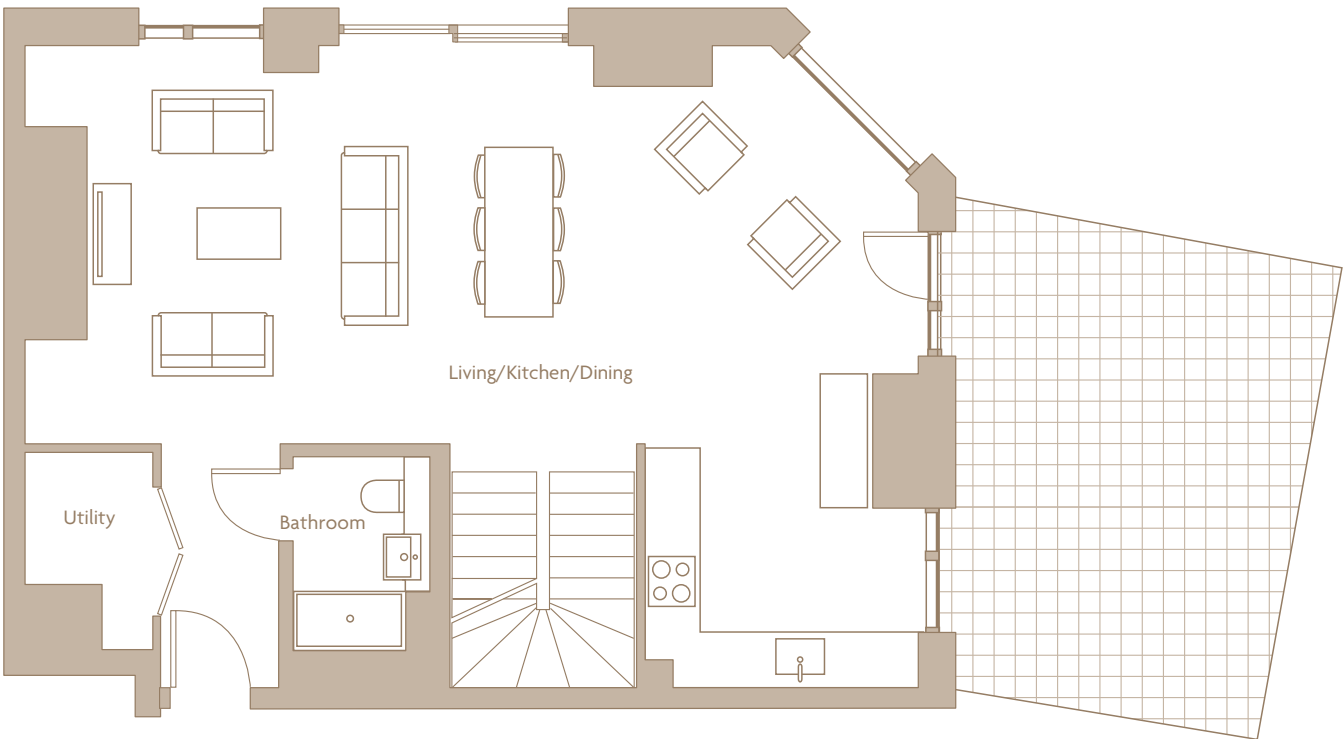
Internal Areas	49.4 sq m	531.74 sq ft
Bedroom 1	4677 x 4520 mm	
Bedroom 2	4327 x 4269 mm	



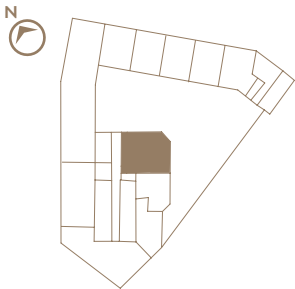
APARTMENT 01  
COVERS FLOORS 1 AND 2

# 3 BED DUPLEX

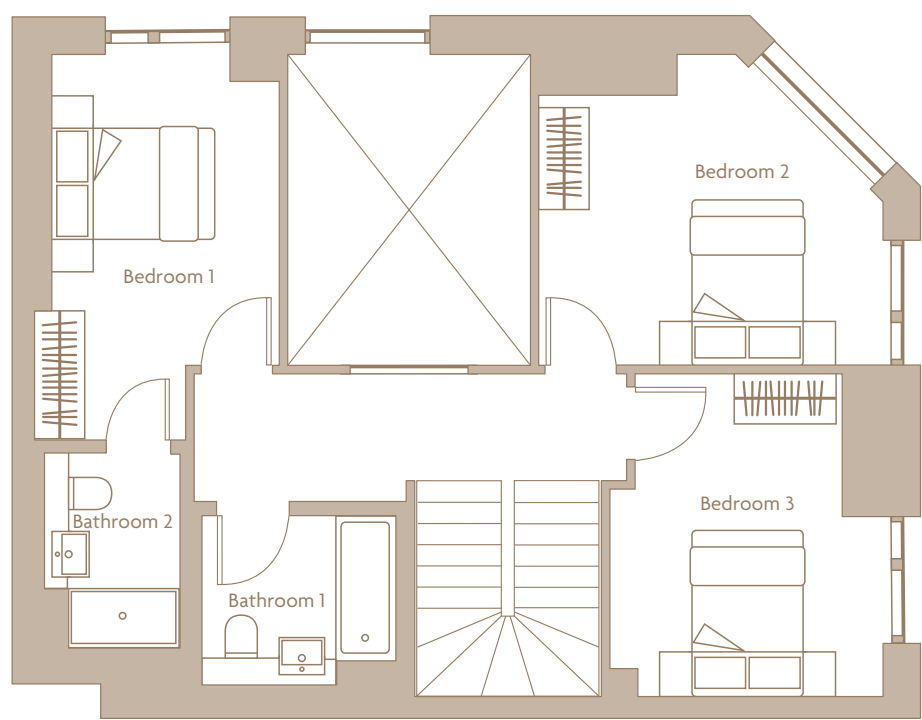
## LEVEL 1



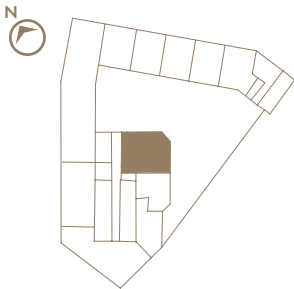
Internal Areas	72.8 sq m	783.61 sq ft
Living/ Kitchen/ Dining	10549 x 7585 mm	



LEVEL 2



Internal Areas	53.2 sq m	572.64 sq ft
Bedroom 1	4555 x 2955 mm	
Bedroom 2	4021 x 3670 mm	
Bedroom 3	3815 x 3226 mm	





CROWN VIEW



Floorplans are intended to give a general indication of the proposed floor layout and refer to approximate measurements only. All stated dimensions are measures from the arrow points and are subject to tolerances of  $\pm 5\%$ . You are strongly advised not to order any carpets, appliances or any other goods which depend on accurate dimension before carrying out a check measure within your reserved plot following build completion. Total apartment dimension are given in NSA (Net Sales Area).

CROWN VIEW

CROWN VIEW

Victoria  
Riverside