

Victoria
Riverside

Bromley Street

Podium B

Homes by
 FEC



Your Street in the City

Running through the heart of Victoria Riverside, Bromley Street is home to 38 new townhouses, apartments and duplexes, many of which open out onto private terraces and balconies.

Comprising a mix of two- and three-bedroom homes, all with access to Victoria Riverside's impressive range of amenities, gardens and open spaces, this unique street is ideal for anyone looking to be at home in the city.





A perfect place to call home

Set in between the greenery of the City River Park and the hustle and bustle of the city centre, Victoria Riverside is home to 634 new townhouses, apartments and duplexes in Manchester's emerging Red Bank neighbourhood.

Bromley Street is in the heart of the development and marks a new chapter for this fast-growing city, putting you in a prime position to embrace Manchester's shopping, art and culture, all while enjoying the trees, parks and open spaces of the City River Park which has received £51.6 million of central government investment.

The reinvented terrace street is bursting with character, the large windows give an abundance of natural light and the brick façade creates a homely yet iconic aesthetic.

Victoria Riverside



The North of England's biggest urban renewal project

Over 15,000 new homes

Over £1 billion total investment

£51.6 million central government investment into a new City River Park

New schools, healthcare facilities and transport links

155 hectares

A planned new community of over 40,000 people

Victoria Riverside marks the first phase of Victoria North (previously Manchester's Northern Gateway), the biggest renewal project Manchester's ever seen. Jointly developed and funded by FEC and Manchester City Council, Victoria North is set to create 15,000 new homes across 155 hectares and seven neighbourhoods over the next 15 years, helping with the shortfall in housing in Manchester. The redevelopment project will create better-connected public spaces, new and improved transport links, and more homes, parks and retail spaces for the city's growing population.

At the heart of the regeneration is the new City River Park which covers 46 ha of new and improved parkland. Victoria Riverside is at the forefront of the new, distinct residential neighbourhood at Red Bank and New Town, benefitting from its location within Manchester City Centre, but offering something new to its community.

A Destination in the Making

Victoria Riverside marks the start of the creation of the City River Park. At approximately 46 ha, it will become one of Manchester's largest city centre green spaces. The park will vary in character providing a diverse and active new recreational corridor for the community including parks and smaller amenity spaces.

City River Park will enhance existing habitats and create new habitats for wildlife and be guided by climate positive design to create results which are as carbon neutral as possible. Connectivity and accessibility are also key ensuring high quality pedestrian and cycle movement within lush green spaces for active lifestyles and well-being.

Red Bank and New Town will provide the first phase of the City River Park. Over 35,000 sqm of new and improved parkland including St Catherine's Wood and the River Irk will be delivered in this first phase.

Welcome Home

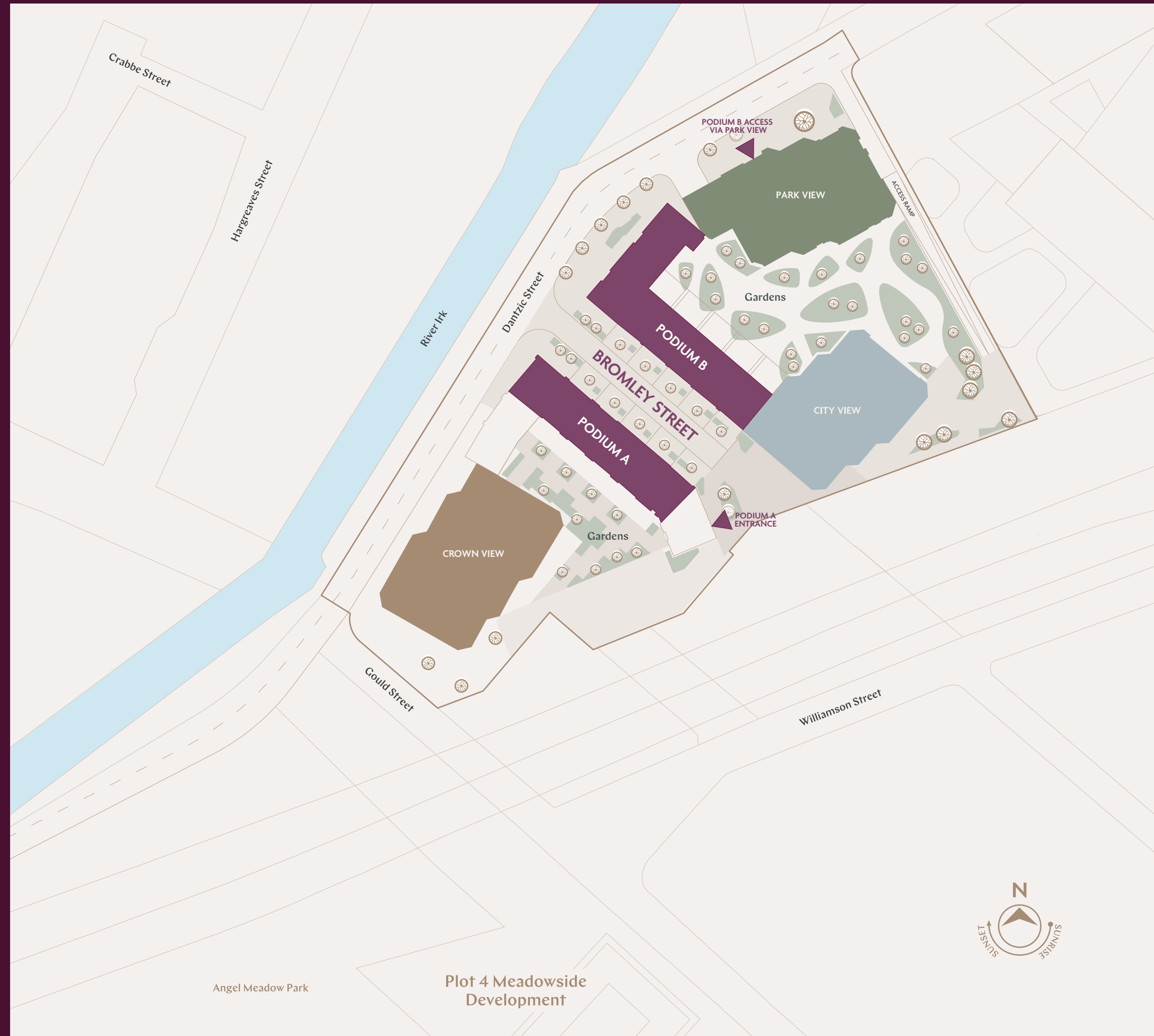
At Bromley Street you'll find a number of home styles from triple height townhouses with podium terraces to corner apartments with dual aspects overlooking the City River Park.



The Podiums

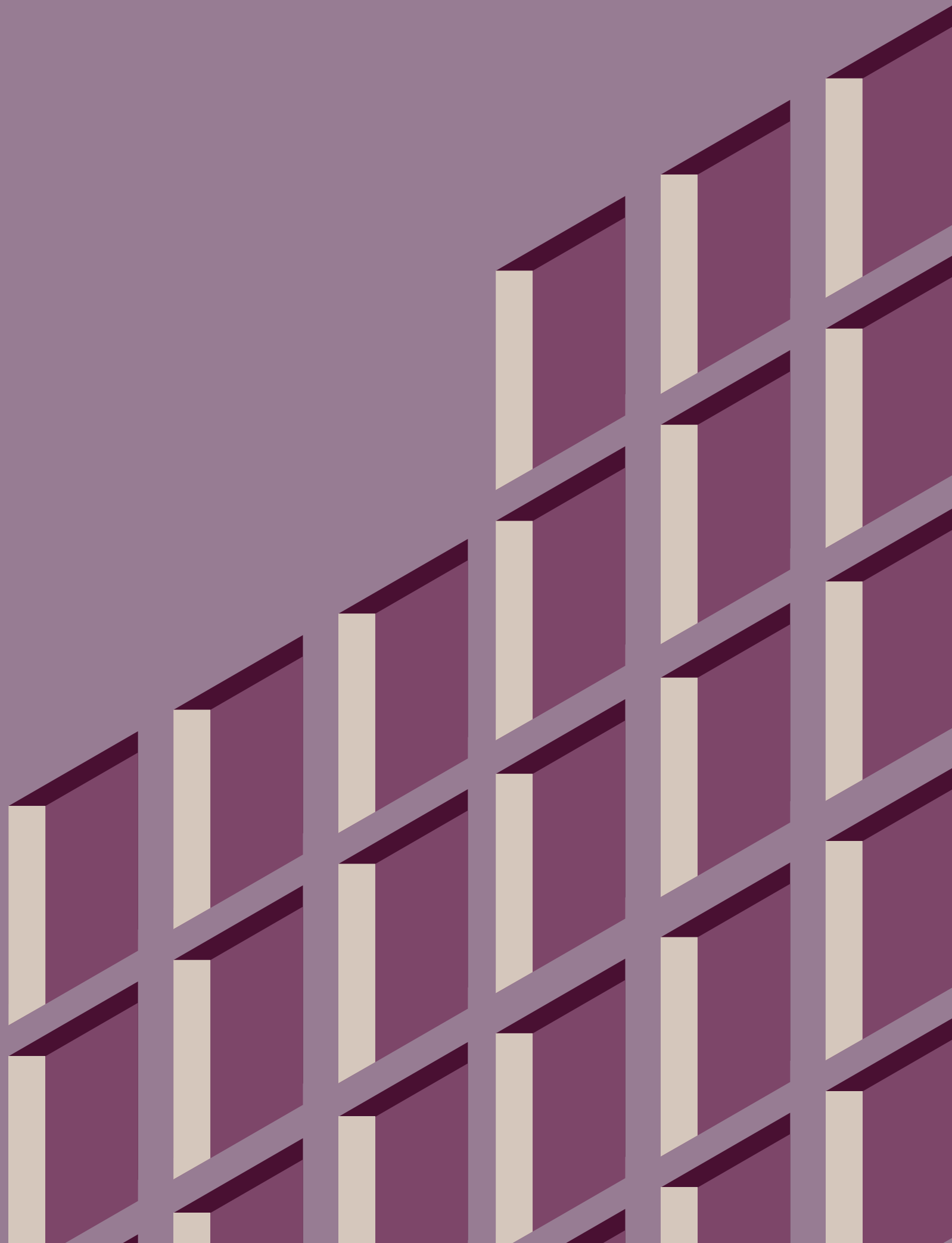
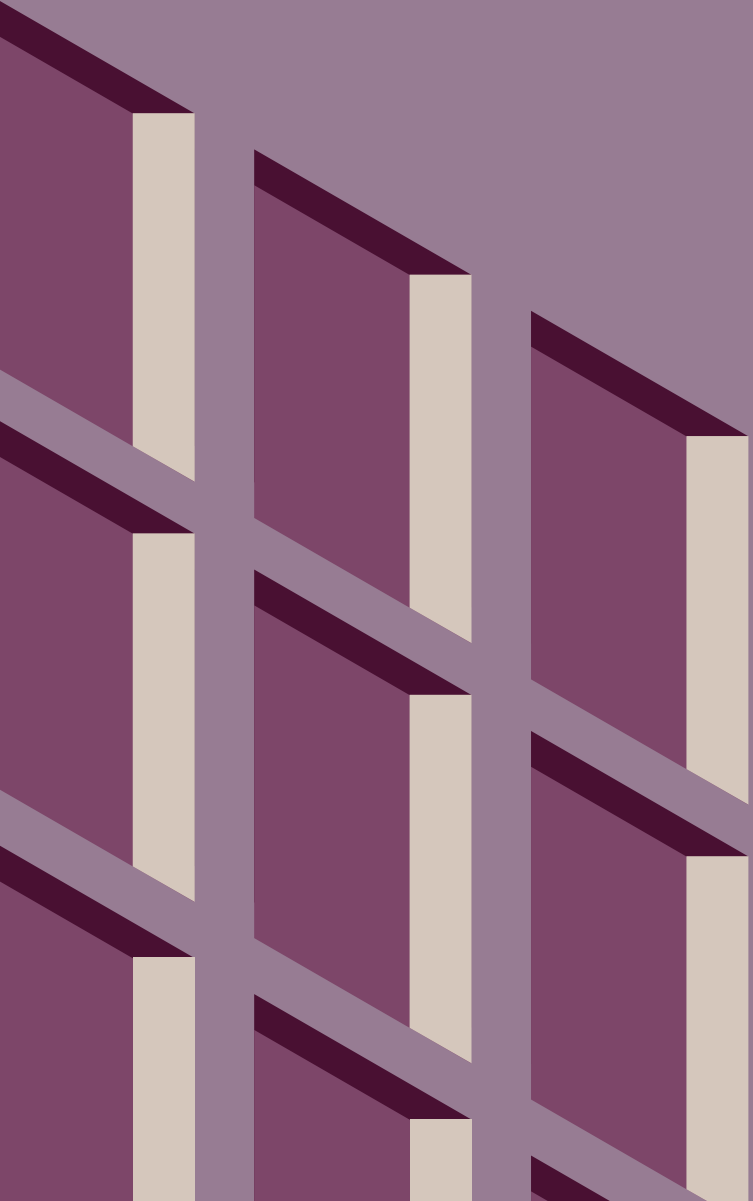
The homes on Bromley Street are split across two podiums. The quiet and tree-lined pedestrianised street between the two podiums offers a unique communal space where children can play safely and neighbours can socialise.

Home to 20 properties, Podium B has access to the amenities and facilities at the neighbouring Park View and City View, including the Park View entrance lobby and lounge, the residents' lounge, and the gym and fitness suite. Residents will also have access to the podium gardens.





Amenities



Entrance Lobby

This bright, laid-back environment is ideal for meeting friends, relaxing with a coffee on the soft seating areas, or finding yourself something to read from the mini library, where you'll find a mix of literary journals, cultural monthlies and a choice of other magazines.



Residents' Lounge

Warm and welcoming, this multifunctional space has an international feel, with South American planting, Asian-inspired pendant lighting and ash wood panelling behind the sofas. If you're looking to get a few people together, the dining area and wine bar can also be hired for events, parties and small gatherings.



Gym & Fitness Suite

You'll also have access to the gym and fitness suite at the podium level, which is fully fitted with state-of-the-art equipment and is open and available 24/7.

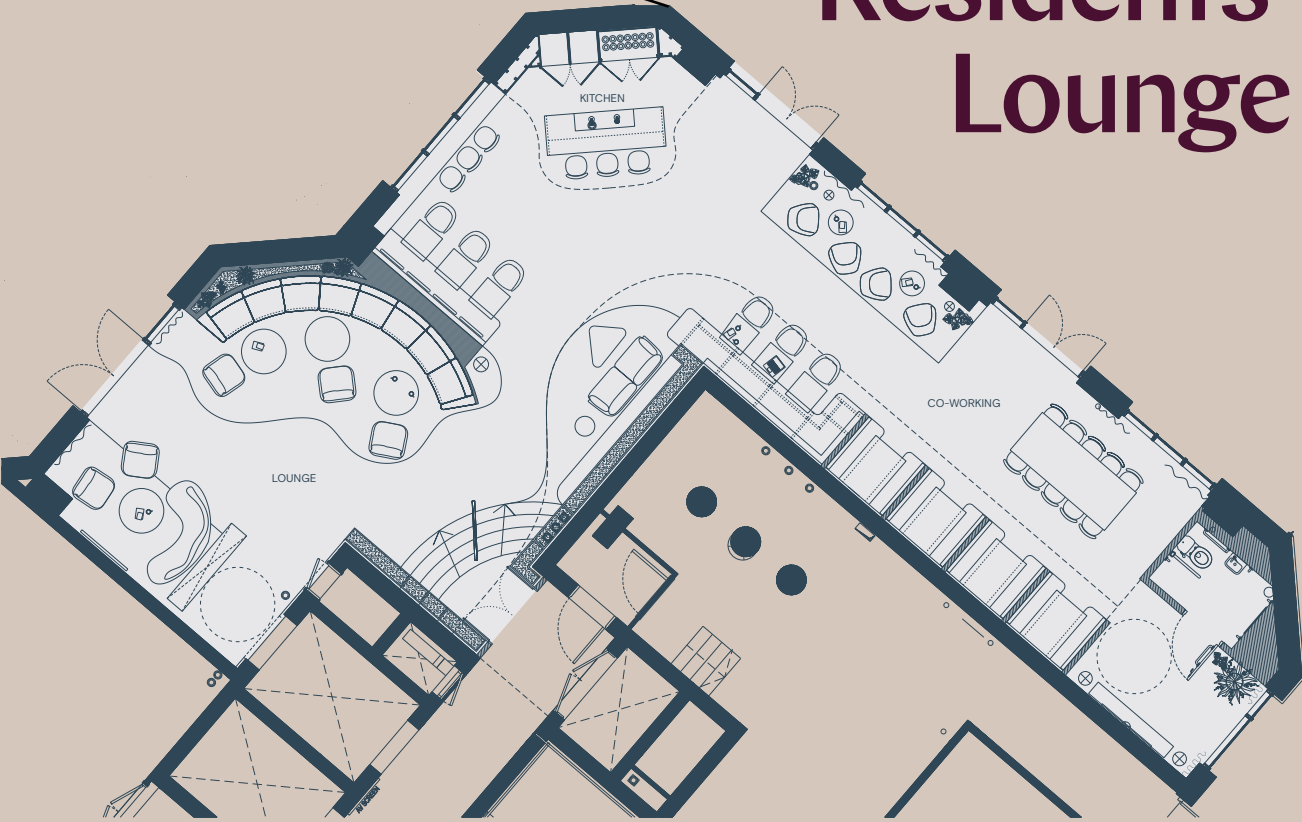




Gym & Fitness Suite



Residents' Lounge





The Podium Gardens

As well as many featuring their own private terraces and balconies, all the homes on Bromley Street have access to the Podium Garden, a lush, green space for everyone at Victoria Riverside to enjoy. At the centre of the garden, two lawns are ideal for outdoor yoga, picnicking, or simply catching some sun in the warmer months. And if you're working from home, there's an outdoor work area with desk space, power outlets and a canopy, helping you make the most of the fresh air whenever you're away from the office.

Specification

General

- The majority of townhouses have a garage and private terrace on the podiums
- All other apartments and duplexes have one of the following: projecting balcony, Juliet balcony or inset terrace
- All townhouses have front doors to Bromley Street
- Dual aspect apartments
- All apartments, duplexes and townhouses are mechanically-ventilated with MVHR units (Mechanical Ventilation with Heat Recovery) with natural ventilation through openable windows which allows fresh air into the apartment
- Townhouse garages have the infrastructure to allow for EV charging points

Entrance Area

- Video door entry system
- Spy hole to apartment front door
- Solid core entrance door with multipoint locking system
- Coat closet/storage (dependent on apartment type)

Living Area

- Open plan living area
- Recessed LED lighting
- Telephone and TV Point to living area (Satellite and broadband enabled subject to purchase subscription)

Kitchens

- Fully fitted base and wall mounted units with handle-less doors and soft closing hinges
- Full height splashback to underside of cupboard
- Solid surface worktop (Sile stone or similar)
- Stainless steel sink with chrome finish mixer tap
- Concealed LED lights below wall mounted units
- Integrated electric oven and hob with extractor hood (Bosch or similar)
- Integrated dishwasher (Bosch or similar)
- Integrated fridge/freezer (Bosch or similar)
- Freestanding washer dryer in utility cupboard (Bosch or similar)

Bedroom

- Recessed LED down lights
- TV point

When finishing the development every last detail has been considered ensuring your new home is completed to the highest standards.

Bathrooms

- Contemporary white steel enamel bath with fitted shower above bath and glass shower screen
- White ceramic floor mounted WC with concealed cistern
- White ceramic wash hand basin with chrome finish mixer tap
- Heated towel rail
- Fully tiled floor and partially tiled walls
- Recessed LED spot lighting
- Shaver point
- Mirrored cabinet with lighting above sink

Shower rooms (2 bed and 3 bed townhouses, apartments and duplexes)

- Walk in shower with toughened glazed opening door
- Fitted chrome shower
- White ceramic WC with concealed cistern
- White ceramic hand basin with chrome mixer tap
- Heated towel rail
- Fully tiled floors with partially tiled walls
- Shaver point
- Recessed LED spotlighting
- Mirrored cabinet with lighting above sink

Flooring and Doors

- Tiled flooring to bathrooms
- Carpets to bedrooms
- Vinyl plank flooring to living areas and kitchen
- Solid core internal doors

Heating

- Mechanical ventilation and heat recovery system
- Wall mounted electric panel radiators
- Hot water storage cylinder

Tenants should note that the Landlord reserves the right to alter any part of the specification (without notice) provided that any change shall be of similar style and quality and shall not diminish the value of the Premises, and subject to clause 6.







Neighbourhood

Retail Therapy

Home to big brands, pop-up markets, indie boutiques and historic department stores, Manchester is one of the country's most vibrant retail destinations.

Below
New Cathedral Street



Above
Manchester Arndale,
Shopping Centre

Below
Selfridges

Just a few minutes' walk from Victoria Riverside, the Arndale Centre is the UK's largest inner city shopping centre, housing over 240 big-name retailers and restaurants, from Apple and Burberry to Five Guys and Bella Italia. If you're looking for something a little more alternative, head to the Northern Quarter, which is known for its vintage shops, trendy bars, record stores and tattoo parlours. On Oldham Street, Afflecks Palace unites guitar shops and gaming arcades with hairdressers and jewellery boutiques, encapsulating the area's independent spirit.

Elsewhere, The Royal Exchange on St Ann's Square is Manchester's home of luxury, housing the likes of Swarovski and Molton Brown, along with a number of local boutiques including Aston's of Manchester. Nearby, you'll find Selfridges, Harvey Nichols, House of Fraser, and Manchester's broad range of restaurants, cafes, bars and hotels.





A Cultural Home

Head to the iconic Whitworth gallery on Oxford Road for industry-leading exhibitions of classical and contemporary art. For the best in multimedia and visual art, HOME is the place to be. They run a varied programme of current and classic films, as well as exhibiting contemporary pieces by emerging and established artists from Manchester and beyond.

If science and history is more your thing, the permanent and temporary exhibits at the Imperial War Museum North and the Science and Industry Museum offer something for adults and children alike. And it wouldn't be right to talk about Manchester's culture without mentioning football. The city is home to two of the biggest clubs in the world in Manchester City and Manchester United. Pick a side and take a stadium tour, or familiarise yourself with the history of the beautiful game at the National Football Museum on Todd St, just down the road from Victoria station.

Whether you're looking for art music, sport, nightlife, or a little bit of everything, Manchester won't let you down.



Right
Aviva Studios

Top Right
National Football Museum

Left Page
St. Peter's Square

Eating Out

Manchester's food scene is as varied and vibrant as its art and culture.



A short stroll from Victoria Riverside, the Northern Quarter is bustling with independent restaurants and eateries. For hearty, American-inspired dishes, Yard & Coop serves up fried chicken, sides and cocktails in relaxed surrounds, while The Pen & Pencil takes its influence from New York, offering diners gourmet hotdogs, burgers and steaks, along with craft ales, shakes and super smoothies.

For Italian comfort food, local-favourite The Pasta Factory is taking pasta back to basics. And if you're in the mood for pizza, Rudy's is the place to be. Serving traditional Neapolitan pizza cooked in wood-fired brick ovens, the award-winning pizzeria has restaurants on Peter Street in Deansgate and Cotton Street in Ancoats, also known as Manchester's Little Italy.

When it comes to fine dining, Manchester is leading the way in classic and experimental cuisine. Named after a nearby Roman fort dating back to AD 79, Mamucium has an all-day menu of contemporary British cuisine and themed cocktails, drawing heavily on locally sourced ingredients to channel the spirit of the North West into every dish.

Head to Peter Street Kitchen on Deansgate for immaculately presented Japanese and Mexican small plates. And if you're celebrating a special occasion, the Cloud 23 bar at the Hilton is the place to go for a post-dinner cocktail while enjoying the panoramic views across the city and beyond.

Top Left
Lucky Cat

Middle Left
Freight Island

Bottom Left
The Ivy
Spinningfields

Top Right
Exchange Square,
Manchester

Right
Mackie Mayor,
Northern Quarter



Connections

► MANCHESTER VICTORIA

8 minute walk • 4 minute cycle



► MANCHESTER PICCADILLY

8 minute cycle • 17 minute metro journey



► SALFORD CENTRAL

8 minute cycle • 16 minute bus journey



► OLD TRAFFORD

15 minutes by car • 34 minutes by public transport



► NORTHERN QUARTER

16 minute walk • 6 minute cycle



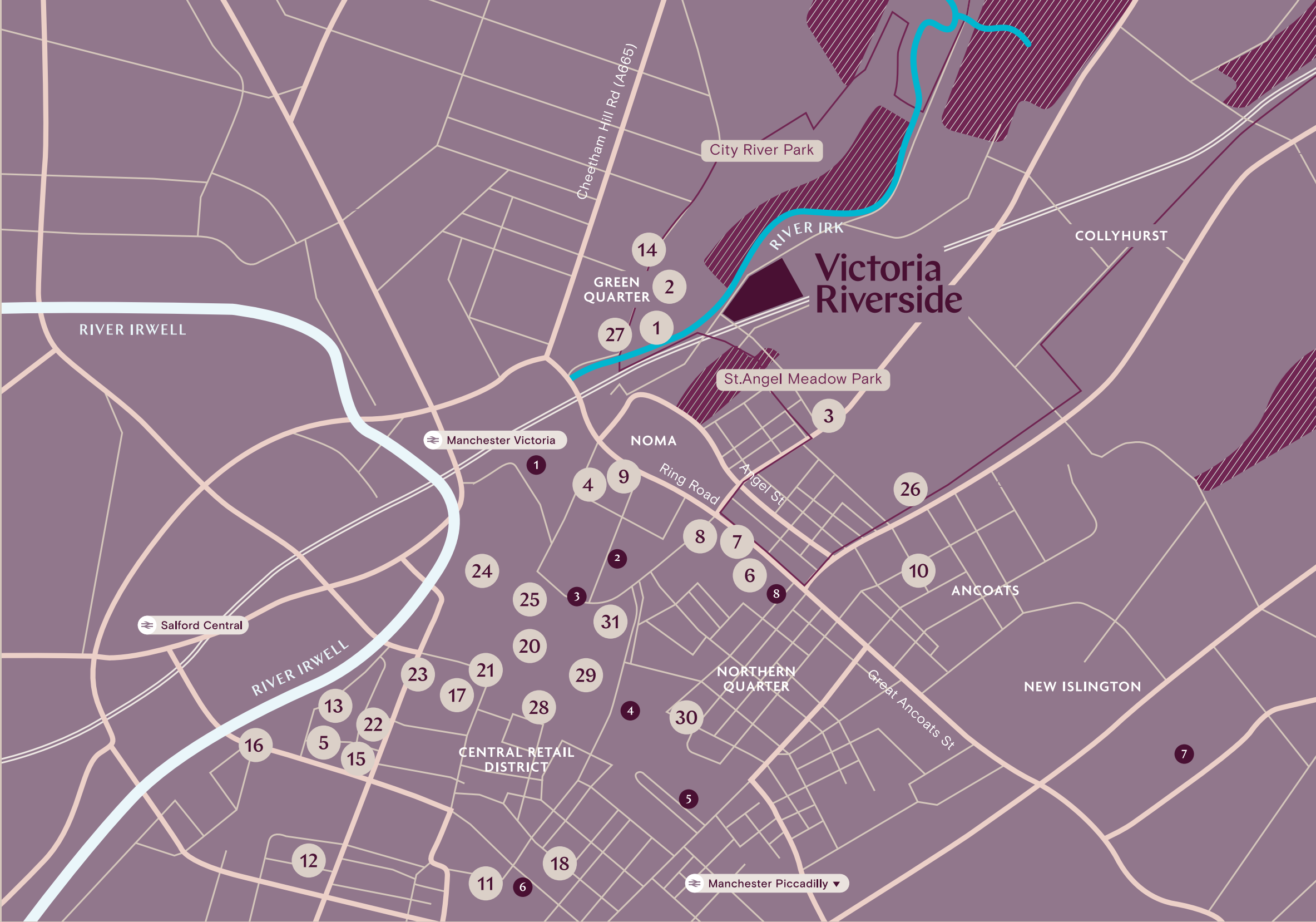
► MANCHESTER AIRPORT

26 minutes by car • 47 minutes by public transport



► LONDON EUSTON

2hrs 46 minutes by public transport



Metro Line

- 1 Manchester Victoria
- 2 Shudehill Bus Interchange
- 3 Exchange Square
- 4 Market Street
- 5 Piccadilly Gardens
- 6 St Peter's Square
- 7 New Islington
- 8 Holt Town

Cafes & Restaurants

- | | |
|--------------------------------|------------------------------|
| 1 Half Dozen Other | 9 New Century Hall |
| 2 Suzume | 10 Mana |
| 3 The Marble Arch | 11 The French at the Midland |
| 4 Sadler's Yard | 12 Hawksmoor Manchester |
| 5 Dishoom | 13 San Carlo |
| 6 Honest Crust | 14 Sparrows |
| 7 The Smithfield Market Tavern | 15 The Ivy |
| 8 Mackie Mayor | |

Culture

- 16 People's Museum
- 17 Royal Exchange Theatre
- 18 Manchester Art Gallery

Retail

- 19 Manchester Fort Shopping Park
- 20 Arndale centre
- 21 Royal Exchange Arcade
- 22 House of Fraser
- 23 Barton Arcade
- 24 Selfridges
- 25 Harvey Nichols

Supermarkets

- 26 Wing Yip Superstore
 - 27 Co Op
 - 28 Tesco Metro
 - 29 Aldi
 - 30 Morrisons
 - 31 Food Market
- Victoria North Boundary



Above
Meadowside, Manchester

Left
Queen's wharf, Brisbane

Below
Consort Place, London

Listed on the Hong Kong stock exchange since 1972, the company brings fifty years' experience operating in the Asia Pacific region. Our highly skilled team brings its extensive expertise to the UK to create vibrant places for people to live, work and play. Far East Consortium opened its UK head office in London in 2011 and a regional office in Manchester in 2016.

Far East Consortium has already delivered a number of completed UK schemes in 2022 including Meadowside and New Cross Central, both in Manchester and Hornsey Town Hall in London. Along with these there are also a number of other developments in progress including Consort Place in Canary Wharf, London, launched 2020, Collyhurst Village, launched 2022 and Red Bank in Manchester which is set to deliver 4,800 new homes.

Far East Consortium will also play a key role as Manchester City Council's Joint Venture Partner in the regeneration of Manchester's, Victoria North, which will see the construction of over 15,000 new homes over the next decade.

The Developer

Far East Consortium International Limited is a leading property group which specialises in property development, hospitality and car parking ventures across mainland China, Hong Kong, Malaysia, Singapore Australia, New Zealand, mainland Europe and the United Kingdom.



Victoria Riverside

victoriariverside.co.uk

47

Email: info@victoriariverside.co.uk

Tel: +44(0)161 509 7840

Address:

Second Floor,
Northern Assurance Building,
9-21 Princess Street,
Manchester
M2 4DN

Northern Gateway No.7 (FEC) Ltd assumes no responsibility and shall not be liable to any person for any loss, damage or expense caused by reliance on the information in this brochure. Northern Gateway No.7 (FEC) Ltd is appointed development manager of Victoria Riverside.

Whilst reasonable efforts have been made to ensure that the information in this brochure is correct, it is designed specifically as a broad indicative guide only and Northern Gateway No.7 (FEC) reserves the right to amend any of the specifications at its absolute discretion as necessary and without any notice.

This brochure does not in any way constitute or form any part of a contract for sale, transfer or lease nor does it constitute a representation or otherwise form the basis of a contract. Photography taken at similar Far East Consortium developments and computer-generated images (CGIs) are indicative only and should not be relied upon as depicting the final as built development or apartment.

Prospective purchasers should satisfy themselves regarding the accuracy of the information provided in this brochure. No assumption should be made regarding any part or the whole of any plot or the estate not shown in the brochure. September 2023.



